

EXTEND™

UPGRADE SYSTEMS

1340 Systems Fatigue Hydraulic Frames Catalog Number 8800-653

EXTEND™ the system life and capability of your 1340 testing system by upgrading the control system to meet today's demanding testing requirements. Load frames manufactured many years ago can be updated to meet today's demanding test applications. Instron® has upgraded thousands of test frames.

EXTEND Package

- Removal of old controls
- Installation of Instron's advanced FastTrack™ 8800 electronics
- The powerful FastTrack applications software suite, for Windows® 95, 98, NT, 2000 and XP
- Keep the existing load frame, grips, actuator, hydraulic power supply and other components for maximum economy
- A large network of highly skilled service and support personnel who are fully factory trained

8800 Series Electronics

- Position and load measurement conditioners are fitted as standard. Additional transducer conditioners can be added for strain measurement.
- Transducer conditioners are compatible with single, half and full bridge strain gauged devices, inductive devices and preconditioned high level DC devices. Adaptor cables are available to retain your transducers.
- Choice of operator interface brings necessary test functions to the test frame where the operator conducts the test.
- Advanced 32-bit sensor technology and 19-bit resolution, no need for transducer ranging.
- Adjustable data sampling rate up to 5 kHz.

Integrated Software and Controls for Flexibility

- Full range of FastTrack software to cover all your applications
- Real time graphs
- Full, complete test control using FastTrack 8800's built-in computer interface
- Data acquisition and analysis

A Choice of Interface

FastTrack 8800 gives you the ability to choose. The FastTrack 8800 desktop and tower controllers allow you to select from a fully featured hardware operator front panel, FastTrack console, or combine the two for maximum flexibility. Whatever your choice, all controllers have hydraulic and actuator control buttons on a frame-mounted handset.



▲
A 1340 frame, upgraded with a FastTrack 8800 tower controller

Why EXTEND?

Excessive downtime and high cost of maintenance/ repairs?

EXTEND customers experience less downtime and greatly reduced maintenance costs. Some customers report productivity increases of 30%.

Questionable test results?

Computer controlled test procedures, together with automated data collection and result generation, provide more accurate and repeatable test results.

Need for computerization?

EXTEND upgrades eliminate obsolete dial or digital indicators and provide PC based automatic result calculations, result storage, report generation and networking.

Lack of networking ability?

Provide access to your test results over a local area network and eliminate the time and expense necessary to deliver test reports to various parts of your company.

1340 Systems

Fatigue Hydraulic Frames

Catalog Number 8800-653



Specifications

Transducers and Conditioners	Position (stroke), load, and one strain channel as standard, 1 or more* strain channel/ signal conditioner slots available
Control Loop Update Rate	5 kHz
Resolution	1 part in >500,000 of \pm full-scale (19-bits)
Data Sampling Rate	Selectable up to 5 kHz
Peak Detectors	Types: minimum, maximum, mean and amplitude Update rate: 5 kHz
Hardware Limit Detectors	Detection time: 1 ms
Hardware Event Detectors	Update rate: 1 kHz
Computer Interface Type	High speed GPIB (HS488 [®])

NOTES:

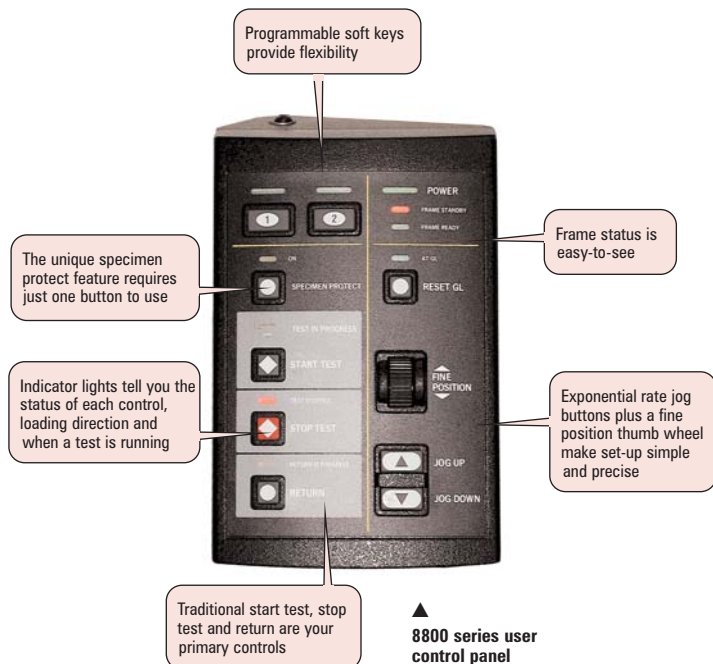
Controller specifications

* 8800 Tower controller has up to 24 transducer capability

Position	Accurate to $\pm 0.5\%$ of transducer full travel
Load	Accurate to $\pm 0.005\%$ of load cell capacity or 0.5% of indicated load, whichever is greater
Strain	Accurate to $\pm 0.005\%$ of transducer capacity or $\pm 0.25\%$ of reading \pm transducer accuracy, whichever is greater

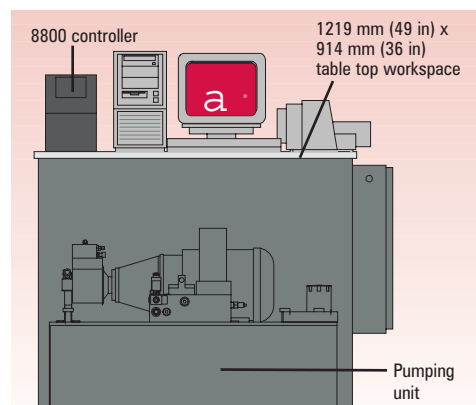
NOTES:

System accuracies (with current Instron[®] transducers)

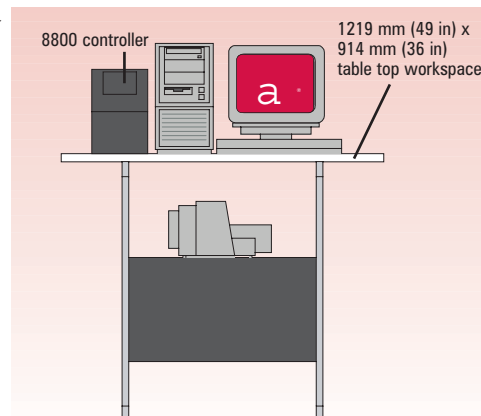


Workstation Options

The integrated workstation serves as both a pump cover and working table



The stand-alone workstation provides adequate space for a controller, PC and printer (requires separate pumping unit)



Choice of controller

Whether it's single or multi axis testing capability you need, Instron has the answer. The FastTrack[™] 8800 family of controllers are state of the art, fully digital servohydraulic controllers which utilize the same core technology.

You can choose from the the 8800 desktop and the 8800 tower. Add advanced features, such as oscilloscope or adaptive control, as and when your applications demand. Adding a second axis is easy. The 8800 Desktop can be upgraded to a tower chassis for additional control and transducer cards.



Corporate Headquarters

100 Royall Street, Canton, Massachusetts 02021-1089, USA
Tel: +1 800 564 8378 or +1 781 575 5000 Fax: +1 781 575 5725

European Headquarters

Coronation Road, High Wycombe, Bucks HP12 3SY, United Kingdom.
Tel: +44 1494 464646 Fax: +44 1494 456123

Industrial Products Group

900 Liberty Street, Grove City, PA 16127-9005, USA
Tel: +1 800 726 8378 or +1 724 458 9610
Fax: +1 724 458 9614

www.instron.com

Instron is a registered trademark of Instron Corporation. Other names, logos, icons, and marks identifying Instron products and services referenced herein are trademarks of Instron Corporation and may not be used without the prior written permission of Instron. Other product and company names listed are trademarks or trade names of their respective companies.

Copyright © Instron 2004. All rights reserved.
All of the specifications shown in this brochure are subject to change without notice.

pod_EXTEND-1340Systems_REV2_1004